

NORTHWEST INDIAN FISHERIES COMMISSION

Leveraging Tribal Programs

National Congress of American Indians
2011 Annual Tribal Exchange Network Conference
Palm Springs, California
May 4, 2011

Presented by: Bruce Jones
Northwest Indian Fisheries Commission



Member Tribes of the Northwest Indian Fisheries Commission



Made up of 20 treaty tribes in western Washington

The NWIFC is primarily a support service organization that provides direct services to its member tribes to assist them in their natural resources management efforts.

The NWIFC employs approximately 70 full-time staff and has 3 offices.



NWIFC Exchange Network Node Project

The Challenge

- Tribes requirement to report to EPA (i.e., 106 funding)
- Desire to exchange data with partners (other tribes, NWIFC, state agencies)
- Tribal data management was in various formats
- Data needed to be stored, managed and assessable



NWIFC Exchange Network Node Project

The Solution

- Implement the NWIFC Node on the Exchange Network,
- Install Node Clients at our Tribe's offices,
- Create a water quality database for tribal water quality data, and
- Providing training on the use of the database, Node, Node Client, and Exchange Network.



NWIFC Exchange Network Node Project

Solution Overview

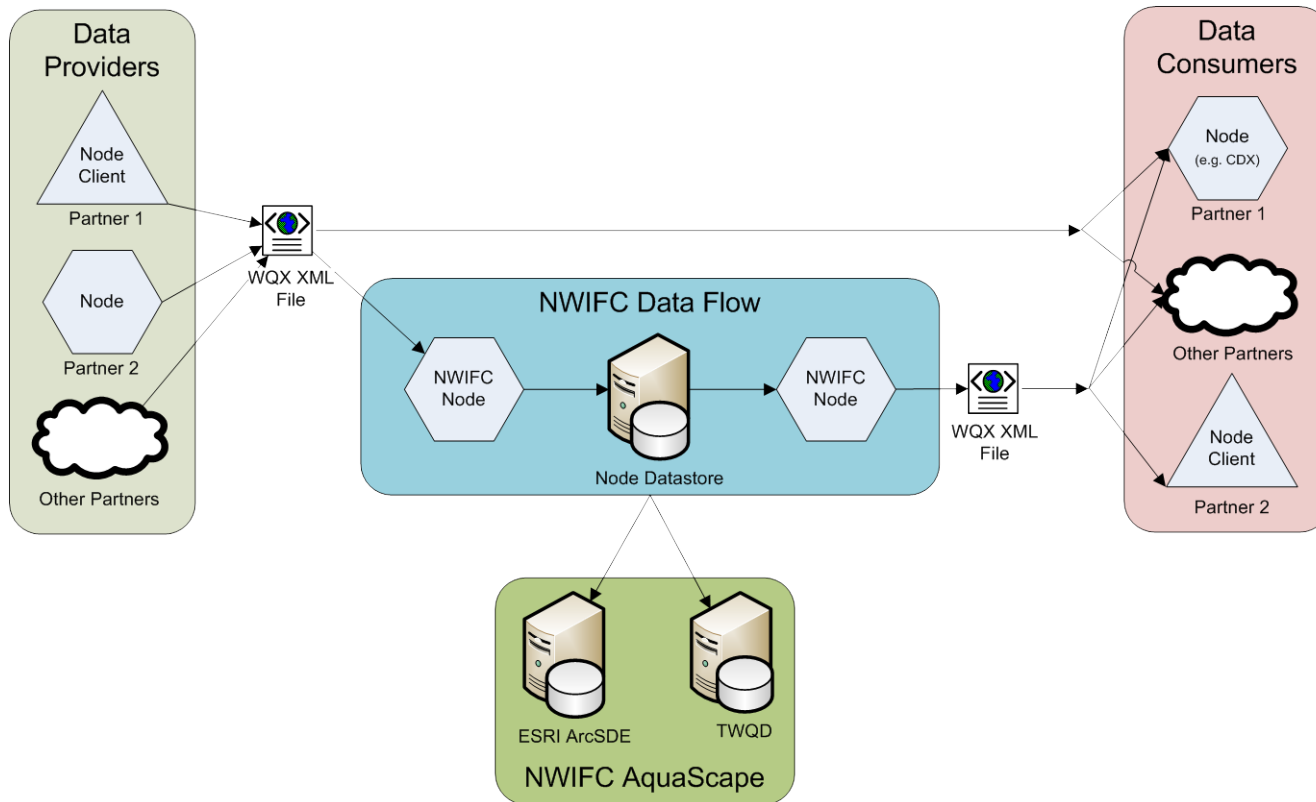
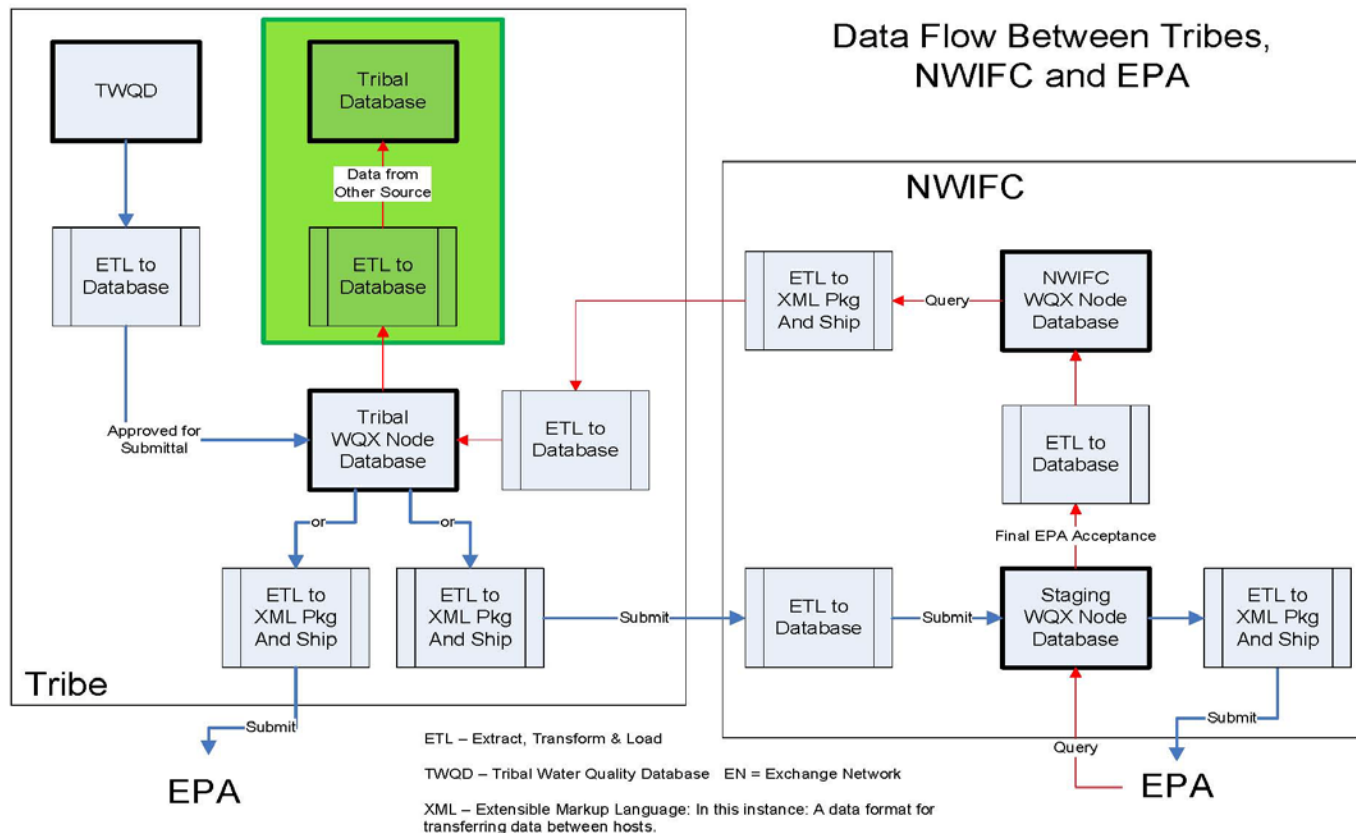


Diagram: From Windsor Solutions, Inc





All data received by NWIFC will be via the "Staging" Node Database. Tribal data will be passed on to EPA (as requested) and held in this database until "Accepted" (no errors) by EPA. Then data will be moved to the "NWIFC" Node database for access by member tribes and EN partners.



NWIFC Node Development Process

Currently we have:

- 17 tribes with the TWQD installed
- 15 tribes with the Node Client installed
- 9 tribes in production mode
- Most tribes are currently mapping their databases/spreadsheets to TWQD to facilitate the transfer of data to EPA.



Tribal Water Quality Exchange Solution

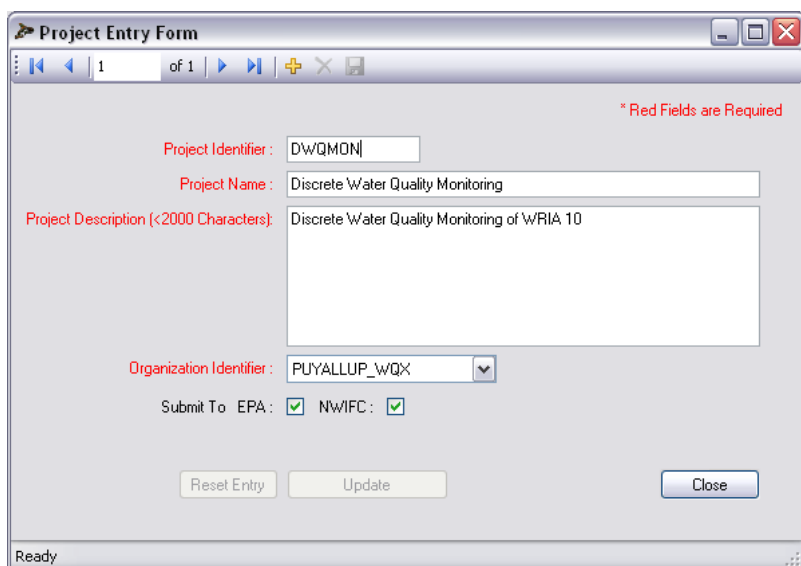
Three basic components:

- **Tribal Water Quality Database**
(with Data Entry Forms)
- **OpenNode2**
(installed at the NWIFC Office)
- **NWIFC WQX Node Client**
(installed at Tribal Offices)



Components of NWIFC Data Exchange Solution

1. Tribal Water Quality Database (TWQD)



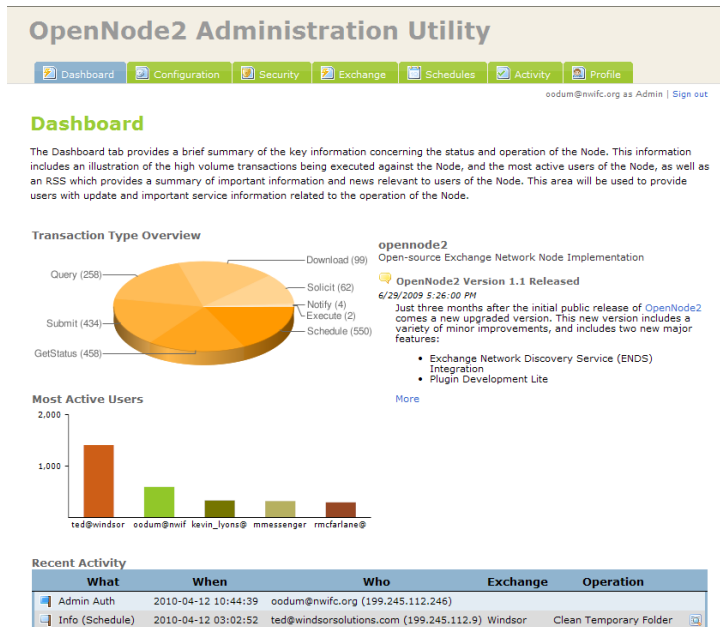
The screenshot shows a web-based form titled "Project Entry Form". It contains several input fields and a dropdown menu. The "Project Identifier" field contains "D\WQMON". The "Project Name" field contains "Discrete Water Quality Monitoring". The "Project Description (<2000 Characters)" field contains "Discrete Water Quality Monitoring of WRIA 10". The "Organization Identifier" dropdown menu is set to "PUYALLUP_WQX". Below these fields, there are checkboxes for "Submit To EPA" (checked) and "NWIFC" (checked). At the bottom of the form, there are three buttons: "Reset Entry", "Update", and "Close". A status bar at the bottom left indicates "Ready". A red asterisk and text "* Red Fields are Required" are visible in the top right corner of the form area.

- Microsoft SQL Express database
- Uses WQX schema
- Validates key fields against WQX domains
- Tribes may use to store and manage data locally



Components of NWIFC Data Exchange Solution

2. Exchange Network Node

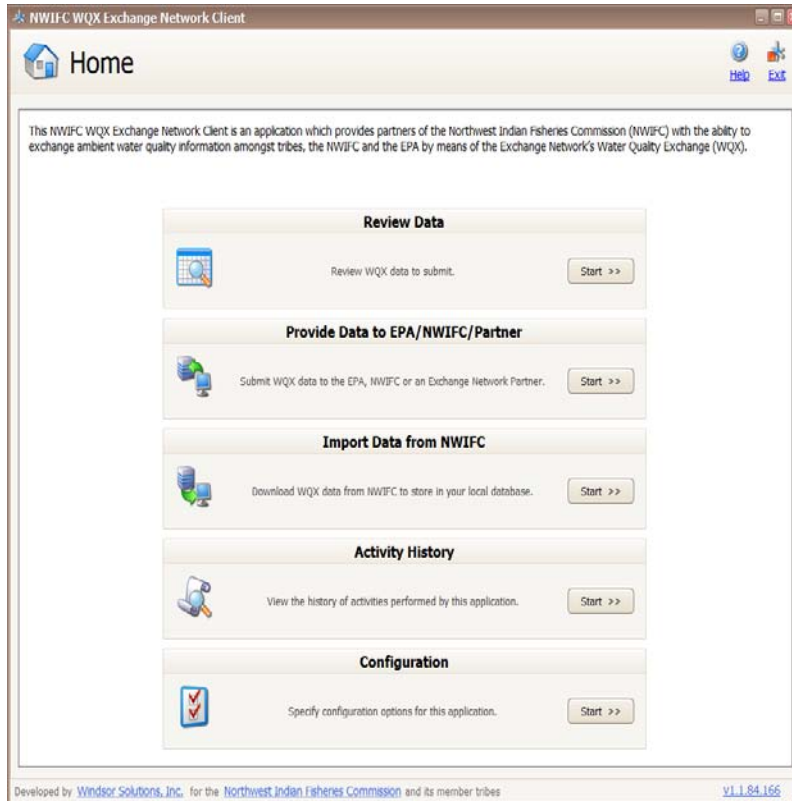


- OpenNode2 at the NWIFC communicates with tribal node clients and EPA node
- May be used to send or receive data
- Responds to requests for data from partners



Components of NWIFC Data Exchange Solution

3. Exchange Network Node Client



- Custom built application
- Easy to use with a browser
- Tribes may use to submit and receive data



Benefits of the NWIFC Solution

➤ **Efficient data exchange technology**

- ✓ Twenty tribes are able to exchange data with each other, EPA, NWIFC and others

➤ **Cost effective – “Build Once, Use by Many”**

- ✓ Nodes clients and TWQD are available at little or no cost

➤ **Common database structure**

- ✓ Allows for more cost-effective tools development and support

➤ **Flexible implementation**

- ✓ Accommodates differences in data resources, systems and technology among tribes



Sharing Information & Technology

- Trading Partner Agreements
- Information & Materials Sharing Agreements

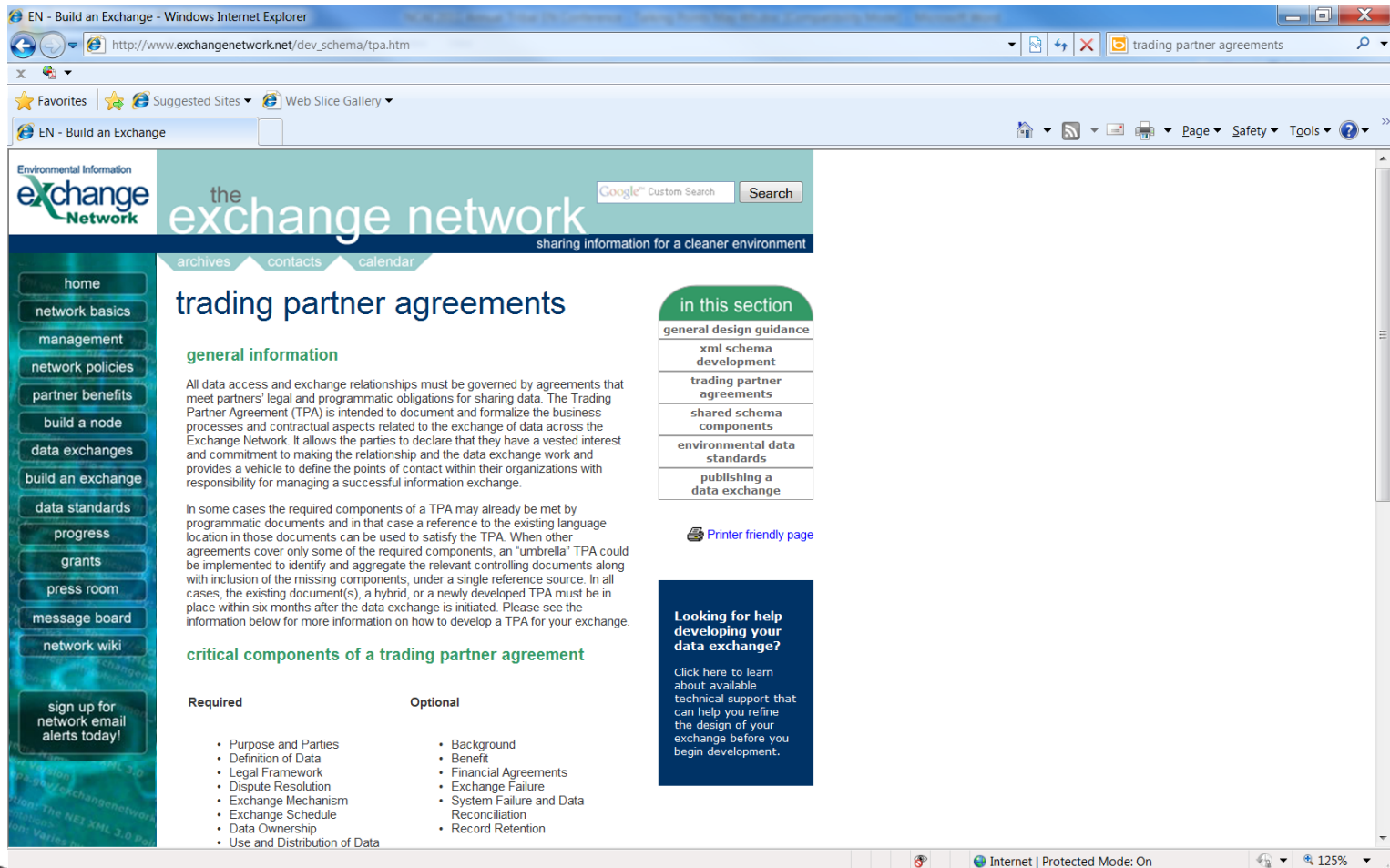


Trading Partner Agreements

- 2 Fundamental Objectives:
 - Establish and characterize a data sharing relationship
 - Document the business processes and issues
- 4 member tribes have TPAs
- Information and template: Exchange Network webpage
(www.exchangenetwork.net/dev_schema/tpa.htm)



Trading Partner Agreements



The screenshot shows a web browser window displaying the "the exchange network" website. The page is titled "trading partner agreements" and is part of a larger site dedicated to environmental information exchange. The left sidebar contains a navigation menu with links such as "home", "network basics", "management", "network policies", "partner benefits", "build a node", "data exchanges", "build an exchange", "data standards", "progress", "grants", "press room", "message board", "network wiki", and "sign up for network email alerts today!". The main content area is titled "trading partner agreements" and includes a "general information" section. This section explains that all data access and exchange relationships must be governed by agreements that meet partners' legal and programmatic obligations. It describes the Trading Partner Agreement (TPA) as a document intended to formalize business processes and contractual aspects related to data exchange. A "critical components of a trading partner agreement" table is also present, listing required and optional components. A "Printer friendly page" link is available. A sidebar on the right titled "in this section" lists links to various documents, including "general design guidance", "xml schema development", "trading partner agreements", "shared schema components", "environmental data standards", and "publishing a data exchange". A blue box at the bottom right offers help for developing a data exchange.

EN - Build an Exchange - Windows Internet Explorer

http://www.exchangenetwork.net/dev_schema/tpa.htm

trading partner agreements

EN - Build an Exchange

Environmental Information
the exchange network
sharing information for a cleaner environment

archives contacts calendar

trading partner agreements

general information

All data access and exchange relationships must be governed by agreements that meet partners' legal and programmatic obligations for sharing data. The Trading Partner Agreement (TPA) is intended to document and formalize the business processes and contractual aspects related to the exchange of data across the Exchange Network. It allows the parties to declare that they have a vested interest and commitment to making the relationship and the data exchange work and provides a vehicle to define the points of contact within their organizations with responsibility for managing a successful information exchange.

In some cases the required components of a TPA may already be met by programmatic documents and in that case a reference to the existing language location in those documents can be used to satisfy the TPA. When other agreements cover only some of the required components, an "umbrella" TPA could be implemented to identify and aggregate the relevant controlling documents along with inclusion of the missing components, under a single reference source. In all cases, the existing document(s), a hybrid, or a newly developed TPA must be in place within six months after the data exchange is initiated. Please see the information below for more information on how to develop a TPA for your exchange.

critical components of a trading partner agreement

| Required | Optional |
|--|--|
| <ul style="list-style-type: none">Purpose and PartiesDefinition of DataLegal FrameworkDispute ResolutionExchange MechanismExchange ScheduleData OwnershipUse and Distribution of Data | <ul style="list-style-type: none">BackgroundBenefitFinancial AgreementsExchange FailureSystem Failure and Data ReconciliationRecord Retention |

in this section

- general design guidance
- xml schema development
- trading partner agreements
- shared schema components
- environmental data standards
- publishing a data exchange

Printer friendly page

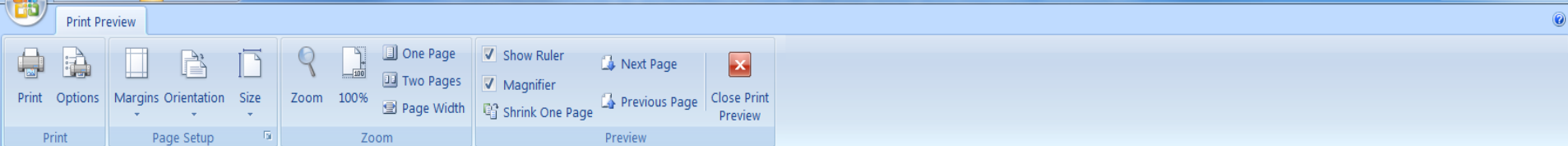
Looking for help developing your data exchange?

Click here to learn about available technical support that can help you refine the design of your exchange before you begin development.

Information & Materials Sharing Agreements

- 2 Fundamental Objectives:
 - Establishes an Information & Materials sharing relationship
 - Gives Grantee limited use rights to the I&M
 - Does not transfer Ownership, interest or any other property rights
 - Basically: Use but don't Sell





Northwest Indian Fisheries Commission
Salmon and Steelhead Habitat Inventory and Assessment Program
6730 Martin Way E., Olympia, WA 98516



Information and Materials Sharing Agreement

NOTICE: READ THESE TERMS COMPLETELY BEFORE USING THE INFORMATION AND MATERIALS DESCRIBED IN THIS AGREEMENT. THE NORTHWEST INDIAN FISHERIES COMMISSION SALMON AND STEELHEAD HABITAT INVENTORY AND ASSESSMENT PROGRAM (SSHIAP) IS WILLING TO SHARE THIS DATA TO THE GRANTEE, ON THE CONDITION THAT GRANTEE ACCEPTS ALL THE TERMS AND CONDITIONS DESCRIBED IN THIS AGREEMENT. IF GRANTEE DOES NOT AGREE TO ABIDE BY THE TERMS AND CONDITIONS DESCRIBED, THEN GRANTEE MUST RETURN THE DATA TO THE NWIFC AND REMOVE ANY COPY OF IT FROM GRANTEE'S STORAGE MEDIA.

This Information and Materials sharing agreement is by and between the NWIFC and the user (Grantee) of this Information and Materials.